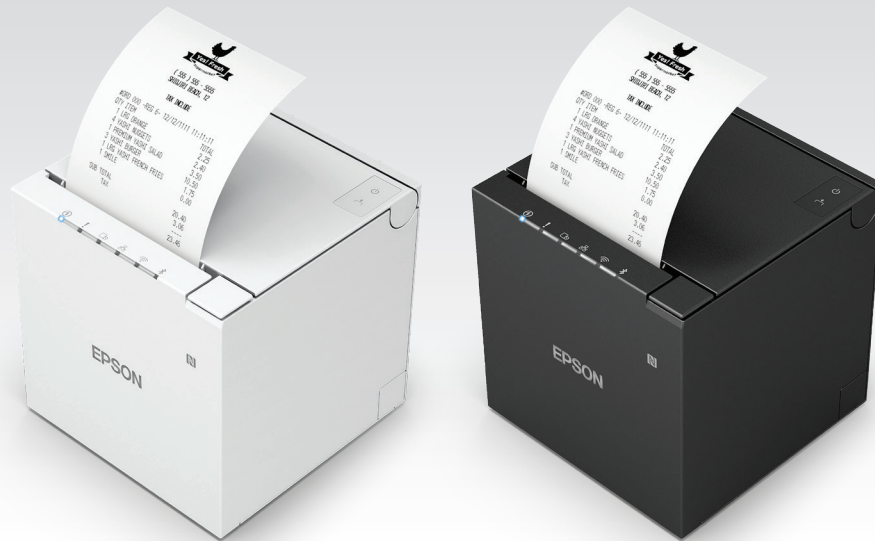


# OmniLink® TM-m30III-H POS Thermal Receipt Printer



## Sleek, compact, advanced connectivity, ideal for mPOS receipt printing.

**Modern and compact design** — sleek 3" thermal receipt printer; small size; supports both front and top paper exits; standard near-end sensor

**Fast, stable network tethering** — wired network communication with iOS® or Android™ mobile device via USB-C connection, at up to 20 Mbps<sup>1</sup>

**Versatile connectivity** — built-in interfaces; USB-A, USB-B, USB-C and Ethernet; optional dual Wi-Fi®/Bluetooth® interface available

**POS hub capability** — connect up to four USB POS peripherals; Sync & Charge feature can deliver up to 18 W of power to a mobile device

**Ready for cloud printing and online ordering** — Server Direct Print available to retrieve print jobs directly from the cloud<sup>2</sup>

**Simple configuration** — easily set up a Wi-Fi or Bluetooth connection with the optional dual wireless interface

**Fast print speed** — quickly produce sharp and crisp text, barcodes and logos; speeds up to 300 mm/sec<sup>3</sup>

**World-class service and support** — 2-year limited warranty; Epson Preferred<sup>SM</sup> Plus Extended Service Plans available for up to a total of 5 years of continuous coverage<sup>4</sup>

**Paper-saving feature** — reduce paper usage by up to 49 percent<sup>5</sup>

**Enhanced enclosure** — IPX2-rated enclosure is water-resistant; antimicrobial and easy to clean

**Print**

**Print Method** Thermal  
**Print Speed**<sup>3</sup> 300 mm/sec  
**Print Resolution** 203 dpi  
**Print Direction** Vertical and horizontal

**Print Fonts**

**Fonts/Column Capacity** Font A: 12 x 24, 48 cpl (default); Font B: 10 x 24, 57 cpl; Font C: 9 x 17, 64 cpl; Kanji Font A: 24 x 24, 24 cpl; Kanji Font B: 20 x 24, 28 cpl (Japanese), 36 cpl (Korean)  
**Character Size** Font A: 1.25 mm x 3.00 mm; Font B: 1.13 mm x 3.00 mm; Font C: 0.88 mm x 2.13 mm; Kanji Font A: 2.50 mm x 3.00 mm; Kanji Font B: 2.26 mm x 3.00 mm  
**Character Set** 95 Alphanumeric, 18 International, 128 x 43 Graphic, Japanese (11,233 characters of JIS X 0213:2004, 1 special character), Simplified Chinese (28,553 characters of GB18030-2000), Traditional Chinese (13,535 characters of Big5), Korean (8,224 characters of KSC5601)  
**Barcode** UPC-A, UPC-E, JAN8/EAN8, JAN13/EAN13, Code39, Code93, Code128, ITF, CODABAR (NW-7), GS1-128, GS1 DataBar, Code 128 Auto  
**Two-Dimensional Symbol Printing** PDF417, QR Code, MaxiCode, DataMatrix, Aztec Code, Two-Dimensional GS1 DataBar, Composite Symbology

**Media Handling**

**Media Dimensions** 80 mm (79.5 ± 0.5 mm) x 83 mm 3.13" ± 0.02" (width) x 3.27" (roll diameter) 58 mm (57.5 ± 0.5 mm) x 83 mm 2.26" ± 0.02" (width) x 3.27" (roll diameter)  
**Thickness** 48 µm – 80 µm  
**Type** Thermal roll paper  
**Paper Feed Method** Friction feed  
**Paper Back Feed** Yes  
**Width** 3.12"/79.5 mm  
**Paper Loading** Drop-in  
**Roll Diameter (Maximum)** 3.27"/83 mm  
**Core Diameter (Minimum)** 0.71"/18 mm  
**Paper Guide** 80 mm (default), 58 mm spacer included  
**Auto Cutter** Partial cut (default) or full cut

**Connectivity**

**Interface (Standard Model)**  
 USB Type-C (USB 2.0, HS/FS/LS, 18 W device charging)  
 USB Type-B (USB 2.0 FS)  
 Ethernet (10/100Base-T/TX)  
 USB Type-C peripheral device port x 1  
 USB Type-A peripheral device port x 2  
**Interface (Wi-Fi + Bluetooth Model)**  
 USB Type-C (USB 2.0, HS/FS/LS, 18 W device charging)  
 USB Type-B (USB 2.0 FS)  
 Ethernet (10/100Base-T/TX)  
 Wi-Fi (802.11 a/b/g/n/ac)  
 Bluetooth (5.0 dual mode)  
 USB Type-C peripheral device port x 1  
 USB Type-A peripheral device port x 2

**Connectivity (continued)**

**Supported Operating Systems** iOS, Android, Windows<sup>®</sup>, Mac<sup>®</sup> OS X<sup>®</sup>, GNU (Linux<sup>®</sup>)  
**Easy Setting Function** NFC<sup>6</sup>, QR code, Simple AP (Wi-Fi + Bluetooth model only)  
**Easy Setting Tool** TM Utility (iOS, Android), TM-m30III-H Utility (Windows), EpsonNet Config, TM Bluetooth Connector

**Reliability<sup>7</sup>**

**Printer Reliability** 17 million printing lines  
 MTBF: 360,000 hours  
 MCBF: 65,000,000 lines  
**Auto Cutter Reliability** 2.2 million cuts

**General**

**Paper Exit and Loading** Top or Front  
**Spill Resistance** IPX2 rated (front exit only)  
**NV Bit Image Memory** 12KB (maximum)  
**NV Graphics** 384KB (maximum)  
**Receive Buffer** 4KB or 45bytes  
**Development Kit** Epson<sup>®</sup> ePOS<sup>™</sup> SDK (iOS, Android, JavaScript<sup>®</sup>), TM Print Assistant (iOS, Android), OPOS ADK/OPOS ADK for .NET (Windows), JavaPOS ADK (Windows, Linux)  
**Drivers** Epson Advanced Printer Driver (APD), TM Virtual Port Driver, Mac Printer Driver, CUPS Driver  
**Other Tools** Deployment Tool, Monitoring Tool, Epson Firmware Updater  
**Software** TM Utility (iOS, Android), TM-m30III-H Utility (Windows Desktop), EpsonNet Config (Windows, Mac), TM Bluetooth Connector, Deployment Tool, Monitoring Tool  
**Audible Alert** Optional External Buzzer (OT-BZ20)  
**LED Indicators** Power, Error, Paper, Ethernet, Wi-Fi (built-in), Bluetooth  
**Sensors** Paper End, Cover Open, Near-End Sensor  
**D.K.D. Function** Yes  
**Power Consumption** Operating 30.6 W, Standby 1.4 W  
**Power Source** Adapter PS-190  
**Power Saving** Yes  
**Temperature** 5 °C to 45 °C  
**Relative Humidity** 10% – 90%  
**Acoustic Noise Level** 53 dBA  
**Standards and Approvals** EMI FCC Class A, ICES-003 Class A, Safety Standard UL 62368-1/CSA C22.2 No. 62368-1  
**Dimensions (W x D x H)** 5" x 5" x 5", 127 mm x 128 mm x 129 mm  
**Weight** 2.87 lb/1,300 g  
**Color** ENB9 (Epson White), EBCK (Epson Black)  
**Cash Drawer Kick** Yes  
**Cloud Printing Ready<sup>2</sup>** Via Server Direct Print technology  
**USB-Network-Tethering<sup>1</sup>** Up to 20 Mbps. Supports iOS, Android and Windows  
**Smart Device Charging** Sync & Charge up to 18 W via USB-C "PD" port  
**USB POS Peripheral Device Support** Up to 4

**Eco Features**

Paper-Saving Mode  
 Power-Saving Mode  
 ENERGY STAR<sup>®</sup> qualified  
 RoHS compliant  
 Recyclable product<sup>8</sup>  
 Epson America, Inc. is a SmartWay<sup>®</sup> Transport Partner<sup>9</sup>

**What's in the Box**

OmniLink TM-m30III-H, Power Supply PS-190 with AC Cable, Starter Receipt Paper Roll, Setup Guide, 58 mm Roll Paper Guide

**Warranty**

Standard 2-year limited warranty; optional extended warranty available

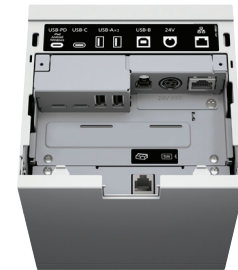
**Epson Preferred Plus Extended Service Plans<sup>4</sup>**

1-Year Return for Repair	EPPSDEXTA1
2-Year Return for Repair	EPPSDEXTA2
3-Year Return for Repair	EPPSDEXTA3
1-Year Renewal Return for Repair	EPPSDEXTA1S
1-Year SITA Coverage	EPPSDSITAA1
2-Year SITA Coverage	EPPSDSITAA2
3-Year SITA Coverage	EPPSDSITAA3
4-Year SITA Coverage	EPPSDSITAA4
5-Year SITA Coverage	EPPSDSITAA5
1-Year Renewal SITA Coverage Extension	EPPSDSITAA1S

**Ordering Information**

Model Number	Interface	Color	Part Number
<b>Epson White</b>			
TM-m30III-H	Standard	ENB9	C31CK51001
TM-m30III-H	Wi-Fi + Bluetooth	ENB9	C31CK51021
<b>Epson Black</b>			
TM-m30III-H	Standard	EBCK	C31CK51002
TM-m30III-H	Wi-Fi + Bluetooth	EBCK	C31CK51022

Accessories	Product Name
Wall Mounting Bracket (OT-WH30)	C32C881017
External Buzzer (OT-BZ20)	C32C890634
Color Customer Display White (DM-D70 White)	A61CH62101
Color Customer Display Black (DM-D70 Black)	A61CH62111
Customer Display White (DM-D30 White)	A61CF26101
Customer Display Black (DM-D30 Black)	A61CF26111
Wireless USB Adapter (OT-WL06)	C32C891321
Proximity Beacon Adapter (BT-820)	C32C824A8761



<sup>1</sup> The actual speed depends on a variety of conditions, including performance of the mobile device, operating system, number of applications running simultaneously and the conditions of other network devices such as switches or routers. | <sup>2</sup> Requires an Internet connection. | <sup>3</sup> Speed based on using approved Epson media. For more information, please visit [www.epson.com/testedmedia](http://www.epson.com/testedmedia). | <sup>4</sup> See individual service plan for details. | <sup>5</sup> Paper savings depend on the text and graphics printed on the receipt. | <sup>6</sup> NFC tag requires use of a device that includes NFC reader, and may require additional software. | <sup>7</sup> Epson's statements about reliability levels are only estimates, based on normal use of the printer using tested media only. See [www.epson.com/testedmedia](http://www.epson.com/testedmedia) for more information on Tested Media. These reliability statements are not warranties of the media or Epson's printers, and the only warranties for printers are the limited warranty statements for each printer. | <sup>8</sup> For convenient and reasonable recycling options, visit [www.epson.com/recycle](http://www.epson.com/recycle). | <sup>9</sup> SmartWay is an innovative partnership of the U.S. Environmental Protection Agency that reduces greenhouse gases and other air pollutants and improves fuel efficiency.

See the latest innovations from Epson Business Solutions at [www.epson.com/forbusiness](http://www.epson.com/forbusiness)

Better Products for a Better Future<sup>™</sup>  
[eco.epson.com](http://eco.epson.com)



Epson America, Inc.  
 3131 Katella Ave., Los Alamitos, CA 90720

Epson Canada Limited  
 185 Renfrew Drive, Markham, Ontario L3R 6G3

[www.epson.com](http://www.epson.com)  
[www.epson.ca](http://www.epson.ca)

Specifications and terms are subject to change without notice. EPSON is a registered trademark, EPSON Exceed Your Vision is a registered logomark and Better Products for a Better Future is a trademark of Seiko Epson Corporation. OmniLink is a registered trademark, ePOS is a trademark and Epson Preferred is a service mark of Epson America, Inc. Mac and OS X are trademarks of Apple Inc., registered in the U.S. and other countries. Android is a trademark of Google LLC. Windows is either a registered trademark or trademark of Microsoft Corporation in the United States and other countries. SmartWay is a registered trademark of the U.S. Environmental Protection Agency. Wi-Fi<sup>®</sup> is a registered trademark of Wi-Fi Alliance<sup>®</sup>. All other product and brand names are trademarks and/or registered trademarks of their respective companies. Epson disclaims any and all rights in these marks. Copyright 2023 Epson America, Inc. Com-SS-Oct-13 CPD-62920 1/23

**Contact:**

